

PRODUCT DATA

MasterFormat: 07 13 26

W. R. MEADOWS®

SEALTIGHT®

NO. 714-C

JANUARY 2019
(Supersedes November 2013)

MEL-ROL® LOW TEMP

Rolled, Self-Adhering, Waterproofing Membrane

DESCRIPTION

MEL-ROL LOW TEMP is a flexible, roll-type, waterproofing membrane, ideal for use in cold temperature applications. It is composed of a nominally 56-mil thick layer of polymeric waterproofing membrane formulated for maximum adhesion at lower temperatures on a heavy-duty, four-mil thick, cross-laminated polyethylene carrier film. The two components are laminated together under strict quality-controlled production procedures.

A handy overlap guideline is printed 2.5" (63.5 mm) in from the material edge on each side to assure proper overlap coverage and to assist in maintaining a straight application. Special exposed polymeric membrane strips are provided on both sides for positive membrane-to-membrane adhesion in the overlap area. The membrane strips are protected by a pull-off release strip. All components of MEL-ROL LOW TEMP work together to provide a cost-effective, positive waterproofing system that's quick and easy to apply. W. R. MEADOWS accessory products included in the MEL-ROL LOW TEMP waterproofing system are BEM, MEL-ROL LIQUID MEMBRANE, MEL-PRIME™ adhesive, POINTING MASTIC, DETAIL STRIP, HYDRALASTIC 836, TERMINATION BAR, PROTECTION COURSE, and MEL-DRAIN™ drainage board.

USES

MEL-ROL LOW TEMP provides a cost-effective answer to properly waterproof foundations, vertical walls, and below-grade floors in residential and commercial construction in cold temperature conditions. It is equally effective for use as a between-the-slab waterproofing on plaza decks, parking decks, and structural slabs. Use it as a waterproofing membrane to isolate mechanical and electronic rooms, laboratories, and kitchens and bathrooms. MEL-ROL LOW TEMP offers positive protection when "wrapped around" major rapid transit, vehicular, utility, and pedestrian tunnel projects.

Installation of PROTECTION COURSE is recommended before backfilling. It can also be used with drainage boards when specified.

FEATURES/BENEFITS

- Provides cost-effective, flexible, versatile, dependable, positive waterproofing protection against damaging moisture migration and the infiltration of free water.
- Offers a quick and easy-to-apply system for maximum productivity.
- Special membrane-to-membrane adhesion provides additional overlap security.
- Meets or exceeds the test requirements of all currently applicable specifications.
- Components work together for positive waterproofing protection.
- Handles with ease on the jobsite.
- This low temperature version is for use when air and surface temperatures are between 20° F (-7° C) and 60° F (16° C). A standard version is available for moderate temperatures and MEL-ROL XLT is also available for application in extra-low temperatures down to 0° F (-17.7° C).

PACKAGING

38.5" (977.9 mm) wide x 62.5' (19.1 m) long, one roll per carton.

COVERAGE

Provides 200.5 ft.² (18.6 m²) per roll. Gross coverage is 200.5 ft.² (18.6 m²). [Net coverage is 187.5 ft.² (17.4 m²) with overlap of 2 1/2" (63.5 mm).]

STORAGE AND HANDLING

Store membrane cartons on pallets and cover if left outside. Keep materials away from sparks and flames. Store where temperature will not exceed 90° F (32° C) for extended periods of time.

SPECIFICATIONS

- A.R.E.M.A.® Specifications Chapter 29, Waterproofing.

CONTINUED ON REVERSE SIDE ...

W. R. MEADOWS, INC.

P.O. Box 338 • HAMPSHIRE, IL 60140-0338
Phone: 847/214-2100 • Fax: 847/683-4544
1-800-342-5976
www.wrmeadows.com

HAMPSHIRE, IL / CARTERSVILLE, GA / YORK, PA
FORT WORTH, TX / BENICIA, CA / POMONA, CA
GOODYEAR, AZ / MILTON, ON / SHERWOOD PARK, AB

TECHNICAL DATA

Property	Technical Value	Test Method
Color		
Carrier Film	White	
Polymeric Membrane	Black	
Thickness		
Carrier Film	4 Mils	
Polymeric Membrane	56 Mils	
Tensile Strength		ASTM D412 (Die C)
Carrier Film	5900 psi (40.71 MPa) min.	
Polymeric Membrane	460 psi (3230 KPa)	
Elongation	971.3%	ASTM D412
Low Temp Crack Bridging 100 Cycle -25° F (-32° C)	Pass	ASTM C836
Peel Adhesion	11.8 lb./in. (2068 N/m)	ASTM D903
Lap Adhesion	8.62 lbf/in. (1508.5 N/m)	ASTM D1876
Water Vapor Permeability	0.036 Perms	ASTM E-96, B
Water Absorption	0.1%, 72 h max.	ASTM D570
Hydrostatic Resistance	Equiv. to 230.9' (70.38 m) of water	ASTM D5385
Puncture Resistance	48.24 lbf (214.6 N)	ASTM E154
Exposure to Fungi	Pass, 16 weeks	Soil Test
Flexibility @ -20° F (-29° C)	Pass	ASTM D1970

EXCLUSIVE FEATURES

MEL-ROL LOW TEMP combines positive waterproofing protection with ease of handling. A handy overlap guideline is printed 2.5" (63.5 mm) in from the material edge on each side, assuring proper overlap coverage and assisting in maintaining a straight application. The polymeric waterproofing membrane is protected by a special, easy-to-remove release paper. The exposed membrane strips on the material edges are protected by a pull-off release strip. Exposed polymeric membrane strips are provided on both sides of MEL-ROL LOW TEMP for positive membrane-to-membrane adhesion in the overlap area. Note the detail, as shown in inset photo. MEL-ROL LOW TEMP is quick and easy to apply.

APPLICATION

Surface Preparation ... Concrete should be cured at least 72 hours, be clean, dry, smooth, and free of voids. Repair spalled areas; fill all voids and remove all sharp protrusions.

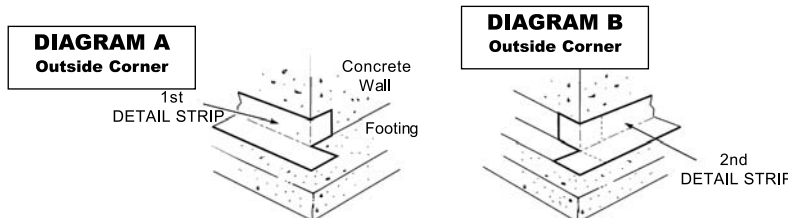
Temperature ... Apply in dry, fair weather when air and surface temperatures are between 20° F (-7° C) and 60° F (16° C). Do not apply to frozen concrete.

Surface Conditioning ... Apply MEL-PRIME adhesive to surfaces that will be covered within one working day. If left exposed overnight, additional adhesive must be applied. Follow all instructions and precautions on containers.

REMOVE release paper from MEL-ROL LOW TEMP from the top edge of the roll and firmly press exposed area to the wall. Remove the release paper from the rolls in a downward direction, pressing MEL-ROL LOW TEMP into place on the wall.

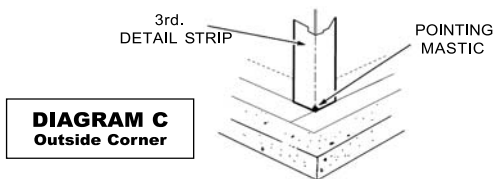
Footing Details ... Use DETAIL STRIP for impaction sheet coverage. First, fold strips lengthwise and then cut at the fold. Material is then ready to install as 4.5" (114.3 mm) strips on either side of the rebar. Any excess can be turned down on the face of the footing. Next, fill the voids around rebars in the keyway with HYDRALASTIC 836. Pour the walls. Install DETAIL STRIP horizontally along the wall where it meets the footing, placing half the material up the wall and the other half onto the footing. Extend the material 4.5" (114.3 mm) beyond outside corners. Slit extended portion of DETAIL STRIP lengthwise. Place the horizontal flap out onto the footing and bend the vertical flap around the wall. (See Diagram A.) Repeat this procedure in the opposite direction as shown in Diagram B.

MEL-ROL LOW TEMP can be applied to concrete, masonry surfaces, wood, insulated wall systems, and metal. All substrates must be clean, dry, and free of all surface irregularities.



Horizontal Application ... Remove release paper on edge, then position the MEL-ROL LOW TEMP membrane. Pull balance of release paper off, running the roll from low to high points, so all laps will shed water. Stagger end laps and overlap all seams at least 2.5" (63.5 mm). Apply a double-thickness of the MEL-ROL LOW TEMP membrane over construction, control, and expansion joints and over cracks greater than 1/16" (1.59 mm) wide.

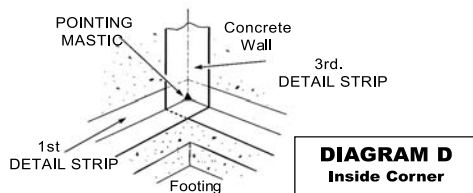
Vertical Wall Application ... Masonry walls may require the application of a cementitious parge-coat. Allow the parge-coat to dry before priming and applying MEL-ROL LOW TEMP. When applied, the parge-coat will produce a smooth, uniform, well-bonded surface. Remove release paper, then apply vertically in lengths approximately 8' (2.44 m) long over the top of the horizontal DETAIL STRIP at the footing. Overlap seams at least 2.5" (63.5 mm). In certain conditions, priming of the overlap may be required. Tightly butt edges of membrane and apply POINTING MASTIC in corner applications. (See Diagram C.)



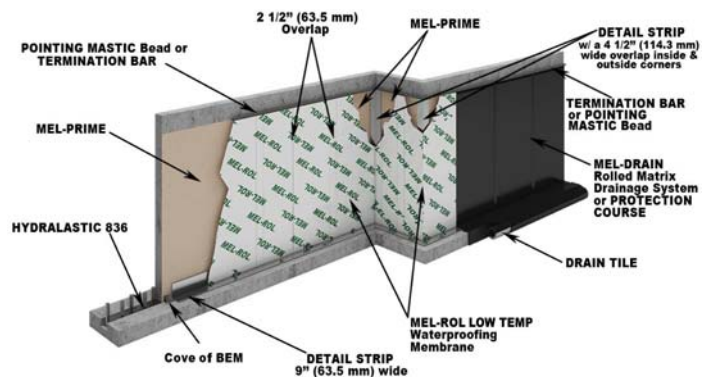
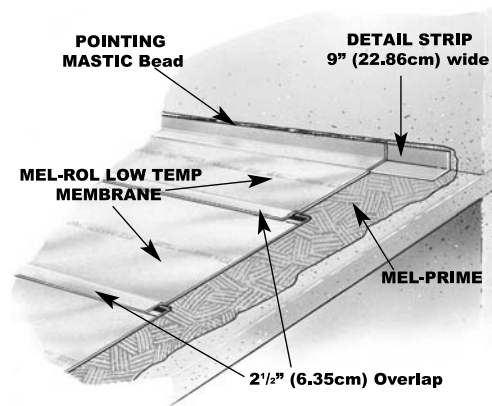
To the top terminations, apply POINTING MASTIC at least 1/8" (3.18 mm) thick and 1" (25.4 mm) wide. As an option, TERMINATION BAR may be used to mechanically fasten the membrane.

Hand-Rub and Roll Press ... Once positioned, immediately hand-rub the MEL-ROL LOW TEMP membrane firmly to the surface, removing any bubbles or wrinkles, then pressure roll the complete surface to assure positive adhesion.

Inside Corners ... Before MEL-ROL LOW TEMP is applied, place a vertical DETAIL STRIP on inside corners extending the material 4.5" (114.3 mm) beyond each side of the corner. (See Diagram D.) Terminate at the footing and finish the corner with POINTING MASTIC.



Outside Corners ... Bend DETAIL STRIP vertically over the outside corner and extend 4.5" (114.3 mm) beyond each side of the corner. Terminate the material at the footing. Finish the corner with POINTING MASTIC. (See Diagram C.)



Drains and Protrusions ... All protrusions should be sealed with two layers of membrane applied at least 6" (152.4 mm) in all directions. Seal all terminations with POINTING MASTIC. Around drains, apply two layers of MEL-ROL LOW TEMP and put a bead of POINTING MASTIC between the membrane and clamping rings and at all terminations, drains, and protrusions. See ASTM D5898.

Inspect and Repair ... A thorough inspection should be made before covering and all necessary repairs made immediately. Tears and inadequate overlaps should be covered with MEL-ROL LOW TEMP ... slit fish mouths and patch. Seal edges of all patches with POINTING MASTIC. Where applicable, horizontal applications can be flood-tested for 24 hours. All leaks should be marked and repaired when membrane dries.

Protect the Membrane ... On all vertical and horizontal installations with the immediate application of PROTECTION COURSE if no drainage system is used, or MEL-DRAIN. To secure PROTECTION COURSE, use POINTING MASTIC as an adhesive, and/or physically attach at the top edge using TERMINATION BAR. Backfilling should be done immediately, using care and caution to avoid damaging the waterproofing application.

PRECAUTIONS

Avoid the use of products that contain tars, solvents, pitches, polysulfide polymers, or PVC materials that may come into contact with MEL-ROL LOW TEMP. The use of MEL-ROL LOW TEMP does not negate the need for relief of hydrostatic heads. A complete drain tile system should be placed around the exterior of footing and under slabs, as required.

ACCESSORIES

BEM ... This one-component waterproofing membrane can be used as a flashing and sealing material, or as a substitute for MEL-ROL LIQUID MEMBRANE.

COVERAGE: As a corner reinforcement and fillet, approximately 14 lineal ft./gal. (1.1 m/L). For a 3" (76.2 mm) flashing, approximately 17 lineal ft./gal. (1.4 m/L). As a fillet, approximately 135 lineal ft./gal. (10.9 m/L). **PACKAGING:** 28 Oz. (828 mL) Cartridges (12 per Carton)

MEL-PRIME ... This solvent-based adhesive is for use at temperatures of 0° F (-17.8° C) and above. Apply by roller.

COVERAGE: 250 - 350 ft.²/gal. (6.14 - 8.59 m²/L)
PACKAGING: 5 Gallon (18.93 Liter) Pails

MEL-ROL LIQUID MEMBRANE ... A two-component material used as a flashing to form fillets at corners and at protrusions. May be used as a substitute for POINTING MASTIC. Product can also be used in between walls and footings in lieu of DETAIL STRIP.

COVERAGE: As a fillet, approximately 135 lineal feet per gallon (10.87 m per liter) **PACKAGING:** 1 Gallon (3.79 Liter) Units, 4 Units per carton.

POINTING MASTIC ... Used as an adhesive and for sealing top edge terminations on DETAIL STRIP and membrane, and to adhere PROTECTION COURSE.

COVERAGE: 1/8" x 1" x 200'/gal. (3.18 mm x 25.4 mm x 16.10 ml). **PACKAGING:** 5 Gallon (18.93 Liter) Pails, 29 Oz. (857.65 ml) Cartridges, 12/ctn.

HYDRALASTIC 836 ... Easy-to-apply, one-component material for sealing around rebar.

COVERAGE: 50 ft.² (4.6 m²)/gallon per 30 mils (dry).
PACKAGING: 5 Gallon (18.93 Liter) Pails.



LIMITED WARRANTY

W. R. MEADOWS, INC. warrants at the time and place we make shipment, our material will be of good quality and will conform with our published specifications in force on the date of acceptance of the order. Read complete warranty. Copy furnished upon request.

Disclaimer

The information contained herein is included for illustrative purposes only, and to the best of our knowledge, is accurate and reliable. W. R. MEADOWS, INC. cannot however under any circumstances make any guarantee of results or assume any obligation or liability in connection with the use of this information. As W. R. MEADOWS, INC. has no control over the use to which others may put its product, it is recommended that the products be tested to determine if suitable for specific application and/or our information is valid in a particular circumstance. Responsibility remains with the architect or engineer, contractor and owner for the design, application and proper installation of each product. Specifier and user shall determine the suitability of products for specific application and assume all responsibilities in connection therewith.

DETAIL STRIP ... Convenient, easy-to-use DETAIL STRIP provides an economical and effective method for sealing vertical and horizontal butt joints, i.e. inside or outside corners and where walls and footings meet.

PACKAGING: 9" x 50' (.23 x 15.24 m) roll, 4 rolls per carton.

PROTECTION COURSE ... Use for vertical and horizontal applications. Adhere with POINTING MASTIC or use mechanical fasteners.

PACKAGING: 4' x 8' (1.22 x 2.44 m) panels.

MEL-DRAIN ... is a dimple-raised molded polystyrene fabric designed to provide high flow capacity to reduce hydrostatic pressure buildup around waterproofing and vaporproofing membranes. Choice of drain types are available for vertical, horizontal, and site applications. Use MEL-PRIME to condition surface prior to application of MEL-DRAIN.

TERMINATION BAR ... is a high strength, pre-formed, multi-purpose, plastic strip designed to support vertical membrane systems and PROTECTION COURSE at their termination point.

PACKAGING: 10' (Holes every 6" o/c, 2" from either end), 25 pieces per carton.

MAINTAIN ENERGY EFFICIENCY

Wet insulating materials lose much of their "R" factor performance characteristics, reducing the energy efficiency of the structure. W. R. MEADOWS thermal and moisture protection products play a key role in *maintaining* the structure's energy efficiency and aiding in the integrity of other structural systems, such as insulation.

LEED INFORMATION

May help contribute to LEED credits:

- EAp2: Minimum Energy Performance
- EAc2: Optimize Energy Performance
- MRc9: Construction and Demolition Waste Management

For BIM models, CAD details, most recent data sheet, further LEED information, and SDS, visit www.wrmeadows.com.