

Extended 90° Corner

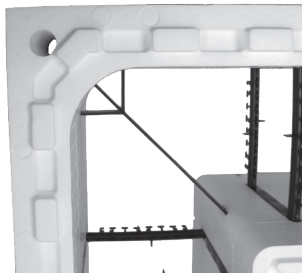
FOX BLOCKS EXTENDED CORNER FEATURES:

- 1) All blocks have Ties* at 8" o/c and are available in 4", 6", 8", 10" and 12" cavities.
** Ties are the black recycled polypropylene members that give the block strength and provide rebar positioning.*
- 2) Like all Fox Blocks, corner blocks are reversible so when you ask for a corner you will get the correct one every time. Each corner is left or right automatically!
- 3) Foam thickness is 2 5/8" on all forms.
- 4) Tie allows rebar lap splices to lay on top of each other for good flowability during concrete placement.
- 5) Ties are clearly marked on EPS for attachments.
- 6) Tie flanges are 1 1/2" wide and full height for ease of attachment.
- 7) Ties touch vertically when stacked, eliminating form settlement.
- 8) Each corner has a 1" hole strategically placed allowing the ICF contractor the option of inserting a full height 3/4" PVC conduit to tie all courses together for extra form support.

Radius on the inside face of the Fox Blocks Corners are: 4", 6" and 8" Blocks = 3"; 10" and 12" Blocks = 8 1/2". Additional EPS was added to the 10" and 12" Corner Blocks to give additional strength for the longer distance from corner to 1st tie.



Every Fox Blocks corner has a large 100 sq. inch fastening zone in the corner.

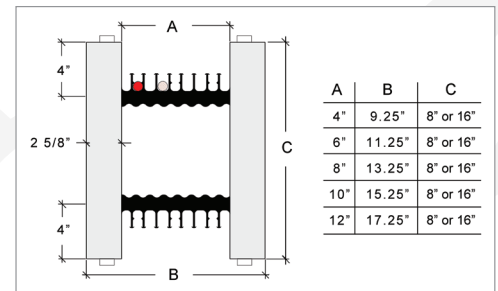
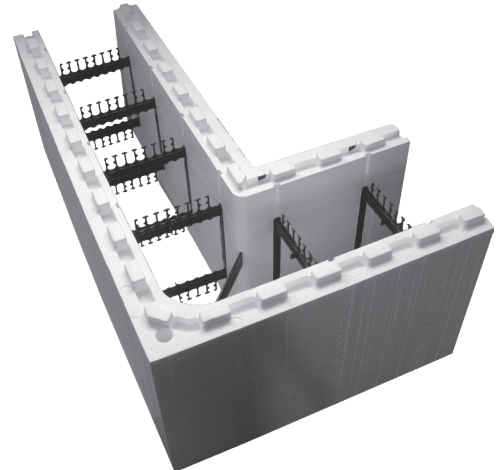


FOX BLOCKS 90s ADVANTAGES

- 7.56 total square feet of coverage
- Less costly per square foot of coverage
- 16" longer than other ICF
- 6 ties
- Two ties on short end
- Less movement during concrete

Being 16" longer than other ICF allows you to eliminate one full straight block for every three Fox Blocks corners used. This also saves you money!

Fox Blocks engineered the 90 degree corner to hold concrete without the need for extra strapping or external bracing.



Fox Blocks 90° Extended Corner Size Chart

Outside Dimensions Are:

- 4" Corner = 38" x 22"
- 6" Corner = 40" x 24"
- 8" Corner = 42" x 26"
- 10" Corner = 42" x 26"
- 12" Corner = 46" x 30"